

runIP Managed Appliance Solution

Maximizing the ROI on your VitalQIP-Investment

By providing an efficient solution to configuring, deploying, updating and patching DNS and DHCP servers the runIP Managed Appliance solution optimizes your VitalQIP investment. It was first to market and remains the technology leader.

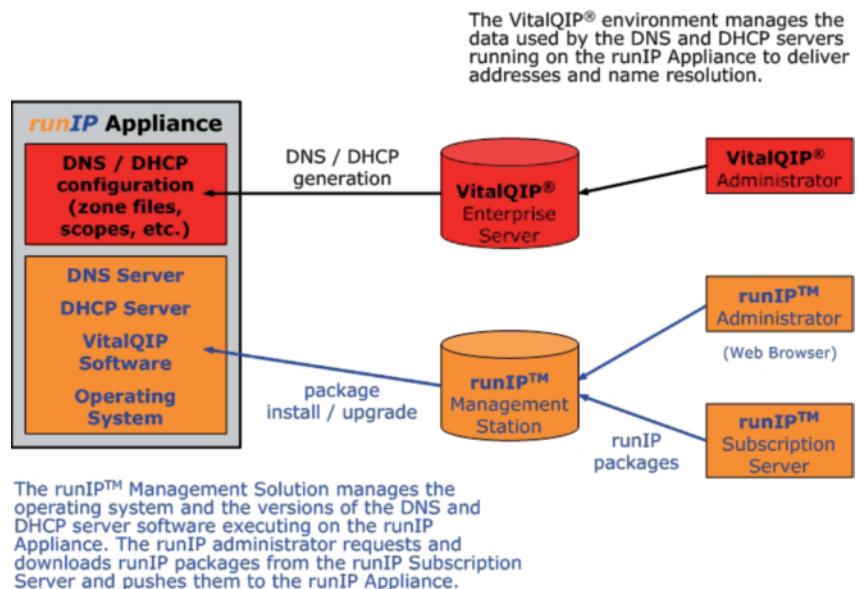
It eliminates the manual effort and the overhead frequently encountered in coordinating disparate groups such as configuration management, change control, server and security management. runIP brings the same high levels of efficiency to managing the VitalQIP remote servers and server software as VitalQIP brings to managing the IP assets.

Since introduction in 2003 the runIP solution has been deployed globally in over 55 countries and builds upon and packages the experience developed by n3k in deploying and supporting thousands of remote servers in hundreds of VitalQIP deployments. It has proven to have equal appeal for enterprises demanding increased efficiency and reduced cost of ownership for their existing VitalQIP installations as it has for those seeking to leverage the efficiency and success of their initial or early stage deployments.

runIP Appliance

Efficient Deployment

runIP appliances feature a hardened, minimized kernel with security tightly locked down to firewall standards - avoiding human error and the costly time you would



Architecture

otherwise need to:

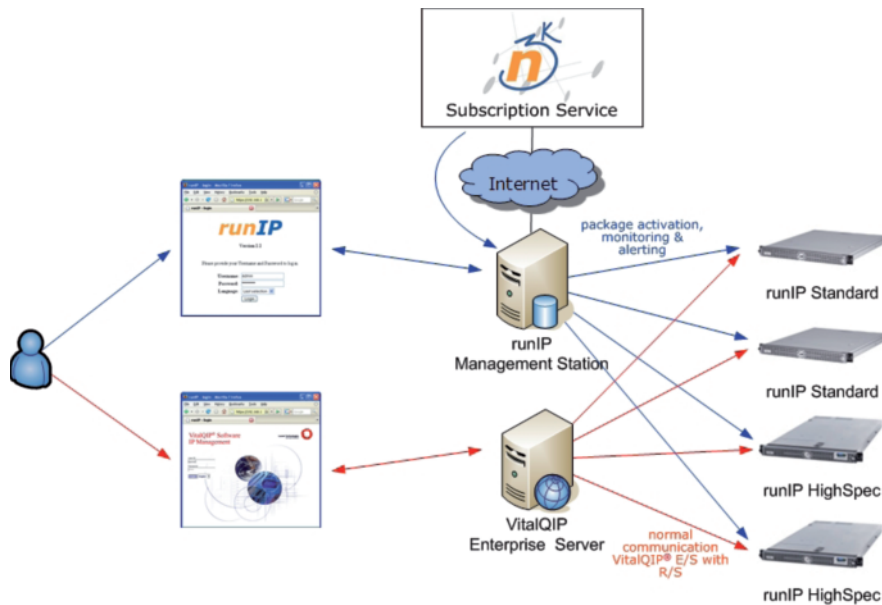
- purchase servers and operating systems
- hand build, validate and secure traditional servers
- install, configure and validate VitalQIP DNS and DHCP services

Reduce all of this to a simple point and click selection at the runIP Management Station to push fully validated and configured server software to your runIP appliances. Whether on initial deployment or after installing a replacement unit a runIP appliance can be rebuilt within minutes.

Dual Interfaces

Each appliance incorporates support for a second network interface. These interfaces can be configured in teaming mode so that both interfaces share the same IP address. Reliability is improved by ensuring interfaces have separate paths through your network, avoiding a single network failure preventing access to your DNS server. Alternatively this facility can be used to separate the management interface from the delivery of the DNS and DHCP services.





Architecture - network overview

Two Hardware Packaging Options

There are two hardware options - the Standard Appliance and the High Specification Appliance. The standard appliance is suitable for locations with up to 5,000 IP addresses. Units can be paired to form a high availability solution with automatic failover. In fact a pair need not even be in the same rack - only connected to the same network segment. If a segment is spanned across multiple locations this can assist in providing a disaster recovery solution. The High Specification appliance offers key additional features such as dual redundant power supplies and mirrored disks.

VMware Support

As an alternative to the two hardware options runIP is also available as a VMware image for clients who have adopted a virtualization strategy.

NTP, TFTP and HTTP-Proxy

runIP appliances can also be used to deliver NTP, TFTP and HTTP Proxy services - bringing the same

ease of management.

High Performance

runIP appliances offer very high performance levels. The runIP Standard Appliance delivers up to 70,000 DNS queries and 4,500 DHCP leases per second. The High Specification Appliance offers up to 120,000 DNS queries and 9,100 DHCP leases per second.

runIP Management Station

Centralized Configuration

The management station allows centralized maintenance of runIP Appliances delivering the VitalQIP remote server configurations at all levels from the underlying operating system without any need for local administration.

The management card allows the whole appliance to be configured and brought into service from any location so that the Management Station can deliver the appropriate combination of operating system and server software ready for production deployment.

Secure Communications

All of your communications with the Management Station are via an intuitive web based GUI available in German and English. Communication between the Management Station and the appliances is encrypted to protect sensitive configuration data while in transit through your intranet or over the public internet.

Package Technology

Whenever you want to upgrade your appliances to a higher release of the VitalQIP DNS or DHCP services you will benefit from the management package technology developed specifically for runIP. Using a central Management Station you define which units run which services and the exact versions of VitalQIP DNS and DHCP servers to be used. The management packages needed in order to do this are made available for internet download via your Annual Subscription Service.

Administrator Access Controls

The Management Station allows you to centrally administer the VitalQIP server software configuration for each of the runIP Appliances you have deployed. Even the underlying runIP software platform can be upgraded without any need for physical access to the machines.

Flexible Permissions

runIP offers flexible assignment of rights based on administrative roles. Permissions such as the ability to reboot, change settings, implement upgrades can be assigned to individual roles for specified appliances or groups of appliances. Administrators can then have one or more of these roles assigned to them to define their rights. In this way highly configurable management control can be implemented.

Grouping

Appliances can be treated individually, or grouped so that managing a whole group of appliances beco-



mes as easy as managing a single appliance. High Availability pairs can be identified in groups through the use of a pair name. Groups are a powerful way to manage your upgrades.

Auditing

Changes made via the GUI are entered in the audit log. This can be accessed at any time to ascertain when changes took place and who made them.

Rollback

Uniquely, the Management Station also features a multi level point and click rollback facility so that you can easily back out any upgrade or patch if it interferes with the effective operation of your network services.

Monitoring

runIP offers a broad range of monitoring functions for both the appliances and the management station all of which contribute substantially to maintaining extremely high availability of services.

Appliance Monitoring

Checks are carried out to ensure the operating system is functioning correctly. In addition the configured

services are checked to ensure that they are still running and if not they are restarted automatically. Probes also allow application level monitoring of DNS and DHCP services to make sure they are delivering the expected responses.

Managing Station Monitoring

The results of Appliance Monitoring are constantly collected by the management station and displayed in the GUI via intuitive dashboards providing an at a glance overview of the state of the services and appliances. In addition relevant events can be directed to other Network Management Consoles via email, SNMP traps or a modifiable user exit.

To complete the monitoring capability the GUI offers a variety of actions for specific services such as turning debugging on or off and the collection of resulting log files. Day to day management costs are minimized.

Annual Subscription Service

Hardware Support

The Annual Subscription Service incorporates your hardware support. A variety of options are available depending on your location and needs - from an appliance repair service via a next business day on site engineer visit to a comprehensive 7 x 24 onsite service with 4 hour response on a five year basis.

Software Support

The Annual Subscription Service incorporates support and maintenance for the whole runIP environment. We develop and make available Management Packages for both the runIP Appliance operating system environment and the various versions, upgrades and patches for the VitalQIP DNS and DHCP server software. Problems can be re-

Key Features

- Fast deployment for an immediate start
- Optimized secure platform for DNS and DHCP servers
- Unique Management Station and Package distribution technology for deployment and upgrades
- Comprehensive service monitoring at all levels up to application for both the management station and the appliances
- High availability DNS
- Ability to employ VMware
- Lights out Management with Management Card via remote access
- Comprehensive single partner support for the whole solution
- Global onsite hardware support
- Worldwide HW-Support (7x24h optional)
- Scales to meet the demands of the largest enterprises
- Can co-exist with existing servers and deploy gradually as needed

Your benefit

- Small invest and high economy
- More security
- Reduced cost for VitalQIP remote server
- Coexistence of runIP with already existing remote servers
- Possibility of introduce runIP step by step

ported by telephone or email with a four working hour initial response.

Management Packages

We provide Management Packages both on specific user request and as new versions, upgrades and patches become available.



Why Choose runIP?

Building on the expertise and experience of the n3k Alliance as the leading supplier of IP Address management solutions and services to blue chip corporate clients spanning a wide variety of sectors including Banking, Insurance, Retail, Distribution, Telecommunications, Media, Manufacturing and many more. It incorporates the very best in appliance packaging and technology and combines our deep knowledge of the VitalQIP environment to deliver economic benefits and cost reduction.

runIP encapsulates our experience of developing and delivering best practice implementations ranging from planning new enterprise roll-outs to maintaining and optimising existing operations. Our professionals are available to offer the back up and support you need, when and where you need it, so you can leverage your IT infrastructure to meet your business objectives.

Finally no other appliance based solution delivers an inbuilt management card, the detailed monitoring capabilities at all levels, the availability of a virtualized appliance or

the ability to deploy globally with onsite hardware support to avoid the hassle of return to base warranty schemes.

These innovative features ensure that runIP continues to set the pace as simply the most sophisticated solution available. Successfully deployed in over 55 countries by some of the largest and most sophisticated technology users.

A runIP choice is the safe choice.

Call or email us now to discover specifically how we can deploy runIP to help you.

